

A peek at culvert history

The channels were originally dug in the fall of 1877 to help supply a growing New York City with adequate drinking water.

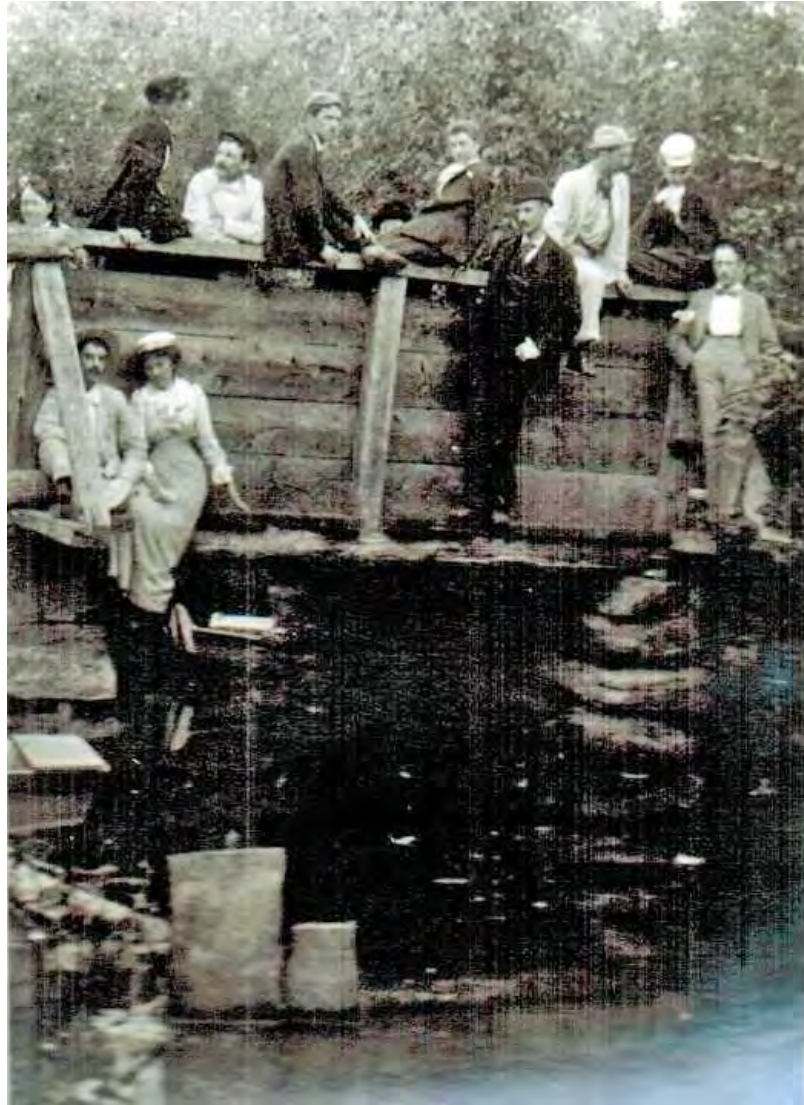
Photos thanks to the community!

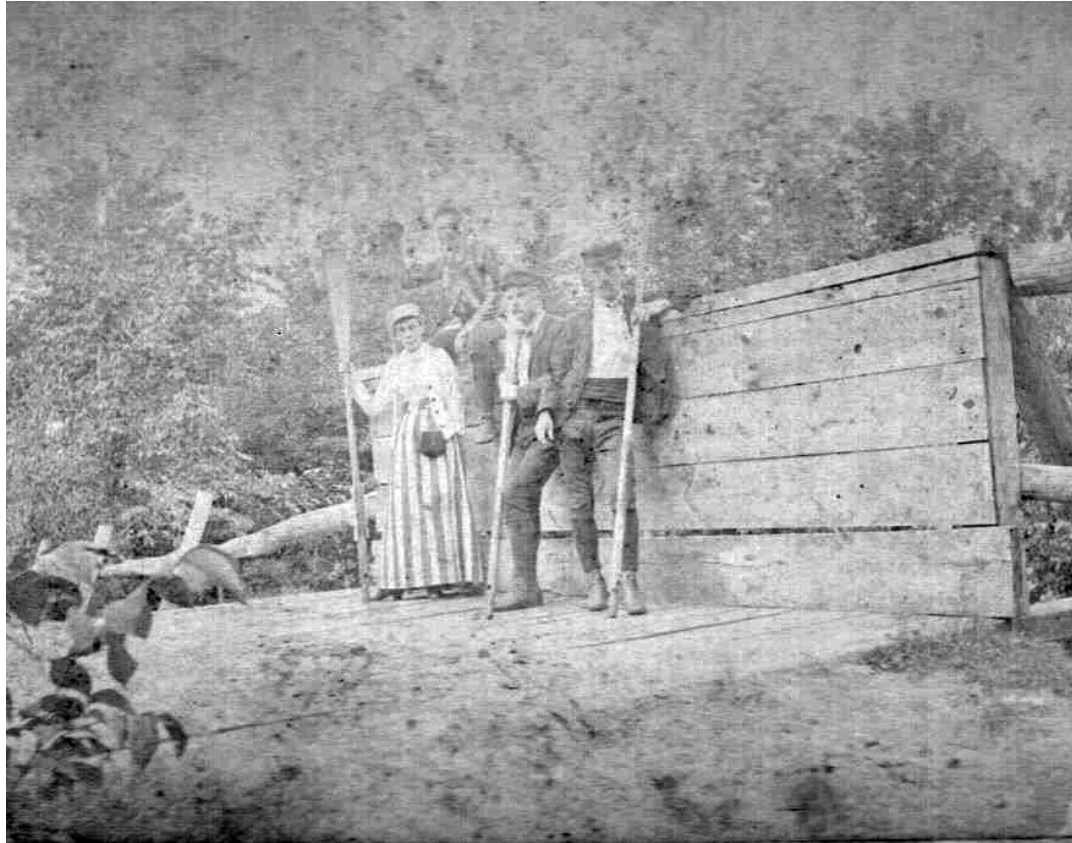


1893



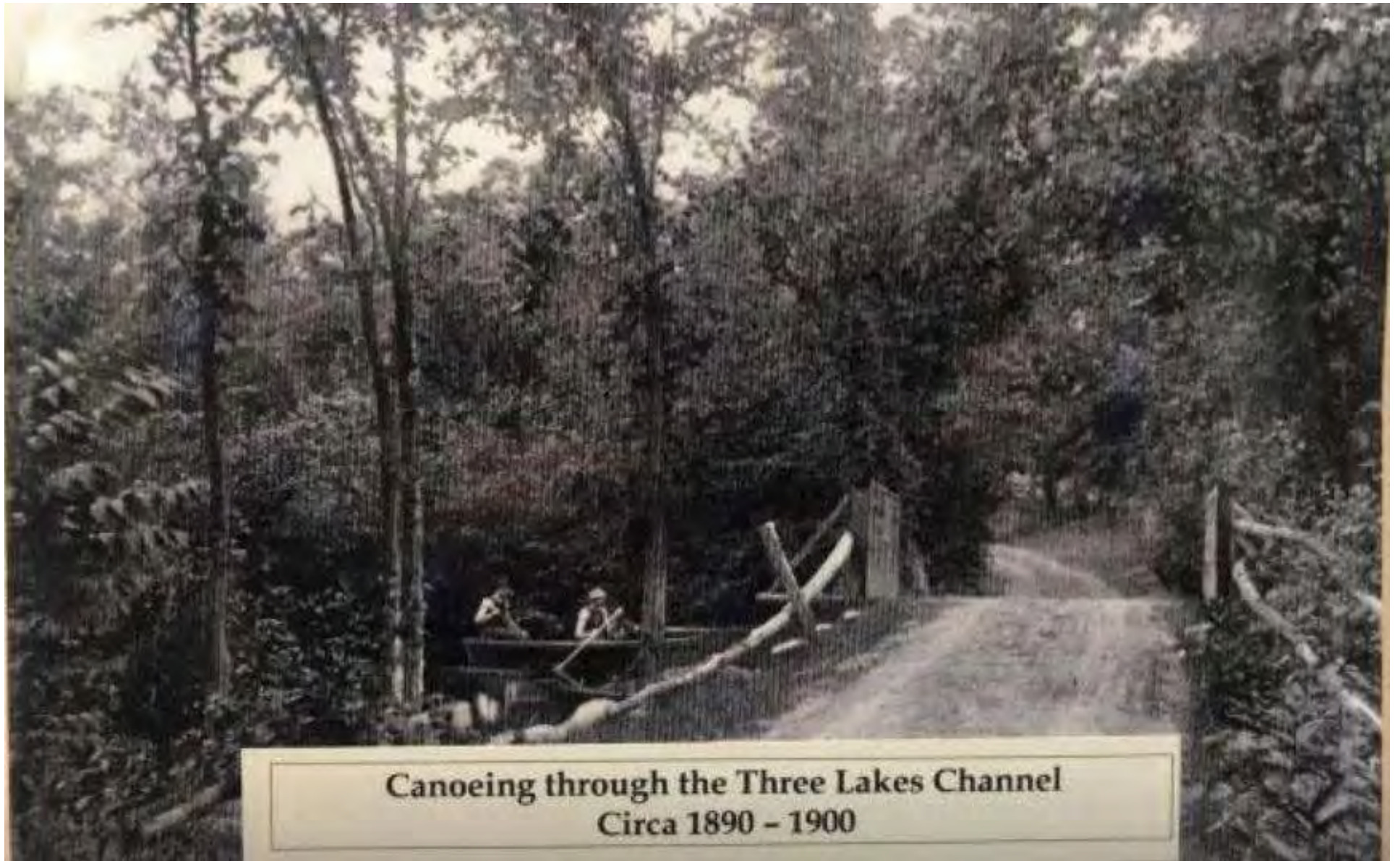
1893







BRIDGE BETWEEN LAKE WACCABUC AND LAKE OSCALETA.



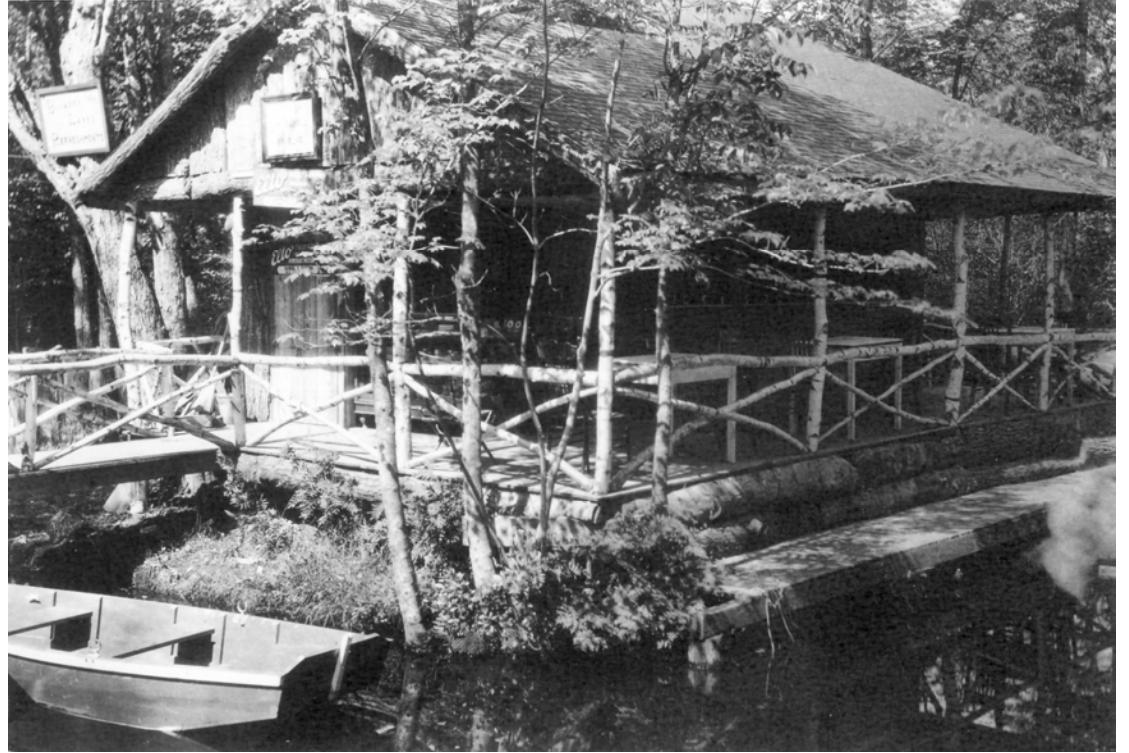
**Canoeing through the Three Lakes Channel
Circa 1890 - 1900**



DICKEN'S OLD BOATHOUSE - WACCAHUC-OSCALETA CHANNEL AT BRIDGE - MID TO LATE 1920'S



C 1924









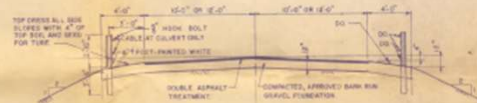
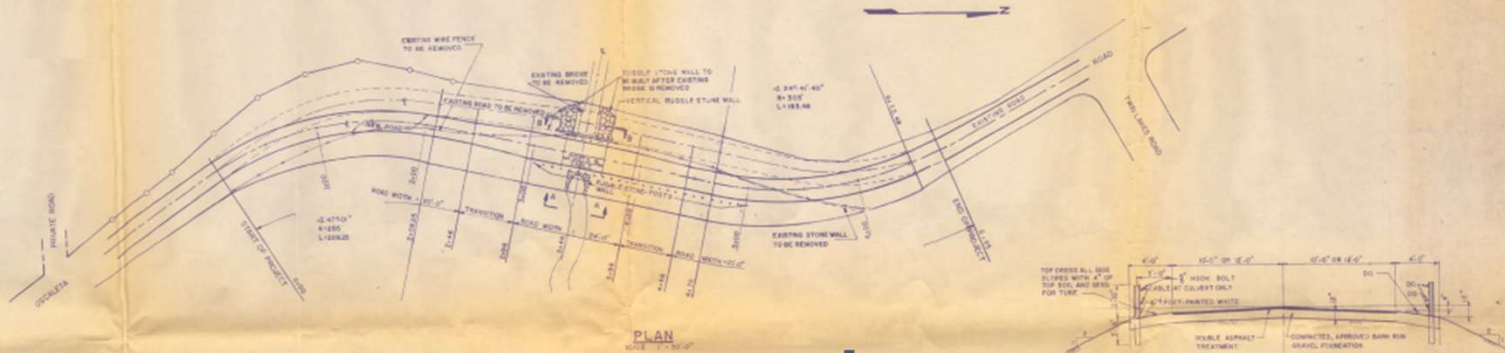
Bridge over channel
between Lake Waccabuc
and Lake Ocala
1951



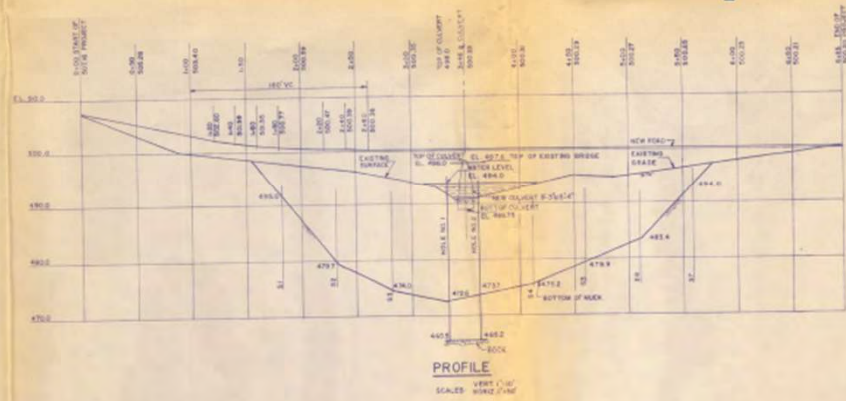
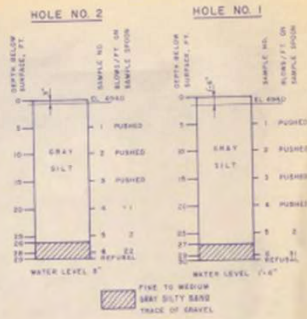
Culvert
that was
installed
c. 1966



CONTRACT NO. I-66
 RECONSTRUCTION OF OSCALETA ROAD AT WACCABUC CHANNEL
 TOWN OF LEWISBORO
 WESTCHESTER COUNTY, N.Y.



BORINGS



TYPICAL SECTION
 SCALE: 1" = 8'-0"

- LIST OF DRAWINGS
 1-GENERAL PLAN
 2-SECTIONS AND DETAILS

SOUNDINGS

NO.	DEPTH OF MUCK, FT.
S1	5
S2	15
S3	20
S4	18
S5	15
S6	12
S7	8

ACCEPTED BY: CHARLES F. SAUTNER JR. TOWN ENGINEER	APPROVED BY: WALTER P. DE WOLFE SUPT. OF HIGHWAYS	RECOMMENDED BY: FRANK P. PADRON, P.E.	Drawing No. 1 of 2 Job No. I-66 Scale As Shown Date Prepared by: P.P.P. Checked by: P.P.P.
---	---	--	---

FRANK P. PADRON
 CONSULTING ENGINEERS
 106 COURT STREET, BROOKLYN, N.Y. 11201

RECONSTRUCTION OF OSCALETA ROAD
 AT WACCABUC CHANNEL

GENERAL PLAN



2008
high
water



2011
beaver
dam



2011
beaver
begin
damming



2011
beaver
dam



2011
beaver
dam



2022
low
water









2023
high
water





A dip in the road: one lane





And then...

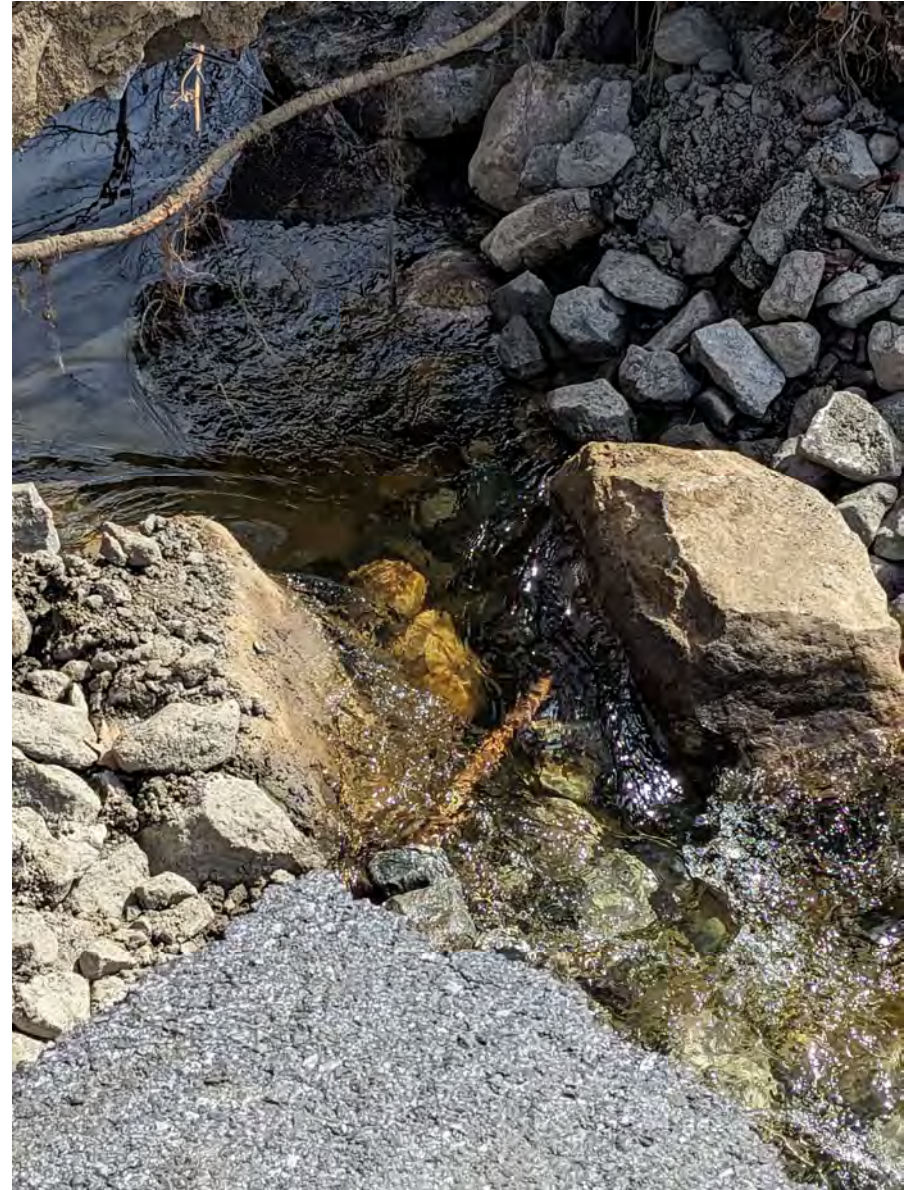








Cleared for some water flow





Increasing water flow











Culvert pipes installed

























