

OSCALETA ROAD CULVERT REPLACEMENT



Public Information Meeting
Thursday March 26, 2026



MEETING OUTLINE

- Introductions
- Existing Conditions
- Project Background
- Site Investigation
- Design Considerations
- Project Alternatives
- Areas of Potential Effects
- NYSDOT Funding
- Permits
- Project Schedule
- Next Steps
- Discussion



OSCALETA RD CULVERT OVERVIEW

- Channel between Lake Oscaleta and Lake Waccabuc
- Channel constructed with wooden bridge in 1877
- Culvert constructed in 1966 supporting vehicular traffic
- Culvert Failure 2026



MARCH 15, 2026 CULVERT FAILURE

BEFORE



AFTER



MARCH 15, 2026 CULVERT FAILURE

BEFORE



AFTER



CLEANUP OF CULVERT FAILURE



NEXT STEPS AFTER CULVERT FAILURE

- Debris removed from channel
- Flow between lakes has been re-established
- Temporary detour has been implemented
- Coordination with Regulatory Agencies ongoing
- Temporary bridge, long term detour, temporary pipes, and expedited review being considered. All come with costs
- Town has chosen to re-open road with temporary pipes



REPLACEMENT PROJECT SUMMARY

- Need for Culvert Replacement
- Roadway Improvements
- Excavation Requirements
- Site Constraints
- Protection of Lakes



ENVIRONMENTAL FEATURES

- Wetlands:
 - USACE
 - NYSDEC
- NYCDEP Watercourse
- Endangered Species:
 - USFWS: Indiana Bat, Northern Long Eared Bat, Tri-colored Bat, Bog Turtle, Monarch Butterfly
 - NYSDEC: Square-stemmed spike rush
- Anticipated Mitigation Measures: Bog Turtle Exclusion Fencing and Monitoring
- Time of Year Restrictions: Tree clearing (if necessary) restricted April - October



SUBSURFACE INVESTIGATION

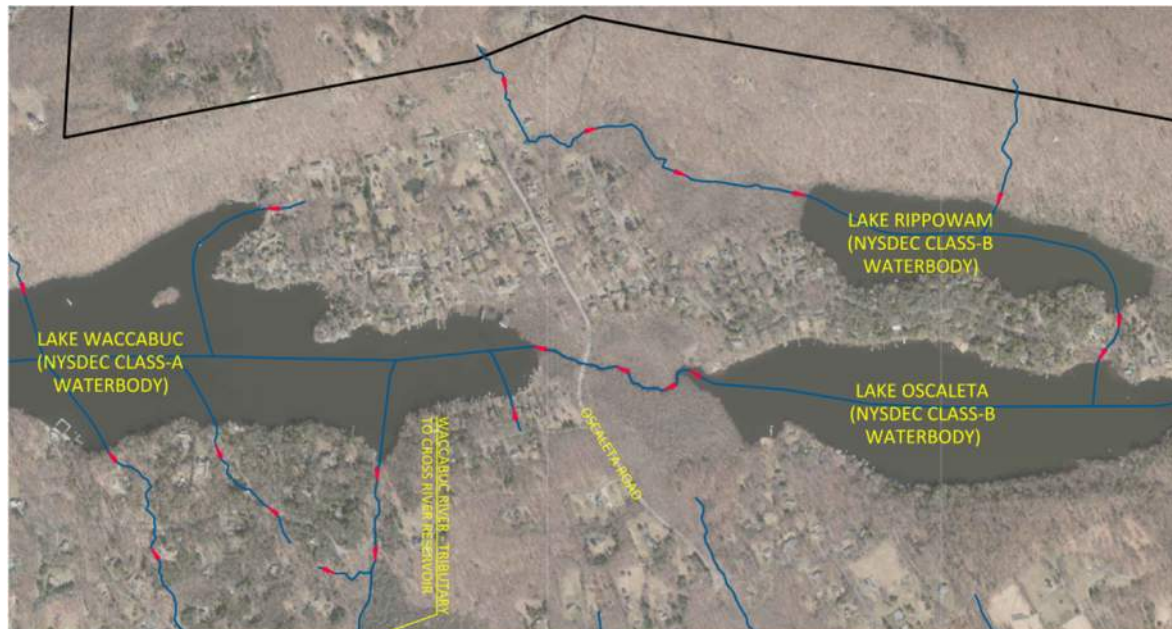
- Performed October 2025
- Existing soils at planned bearing depth of culvert require driven piles to support three-sided culvert
- Existing soils can support a four-sided box culvert
- Wingwalls required to support road and transition the land grade from the road to the culvert opening below
 - These walls have foundation requirements too



HYDRAULIC REQUIREMENTS

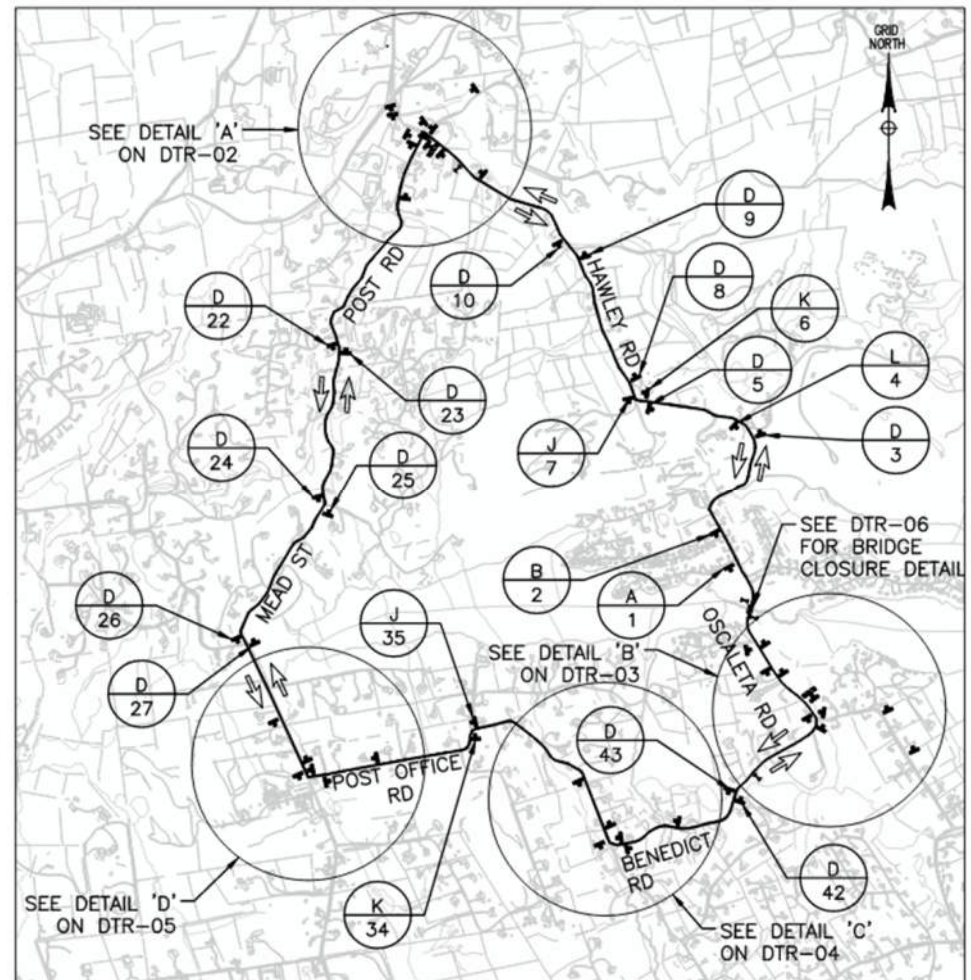
- Equalizing channel between Lake Oscaleta and Lake Waccabuc.
- NYSDOT Functional Class = Major Collector
 - Design Storm = 50-year storm
 - Check storm = 100-year storm

**Highway Design Manual, Chapter 8 Highway Drainage, Exhibit 8-3*



TRANSPORTATION NEEDS

- Classified as a Major Collector
- Main route for local transportation
- 500-800 vehicles per day (one way)
- Detour Route during closure uses western route around Lake Waccabuc

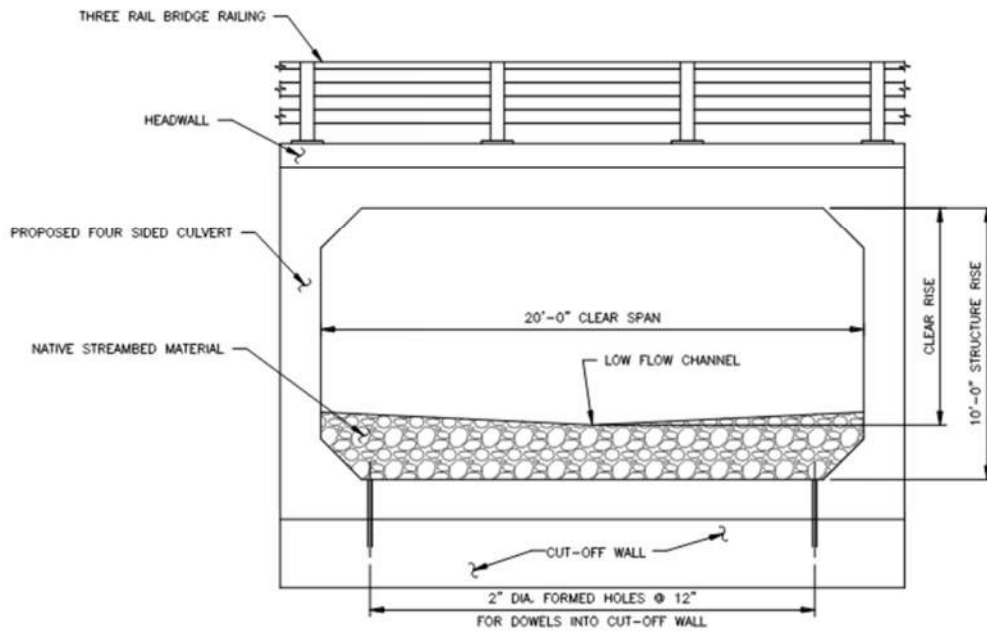


EVALUATION OF ALTERNATIVES

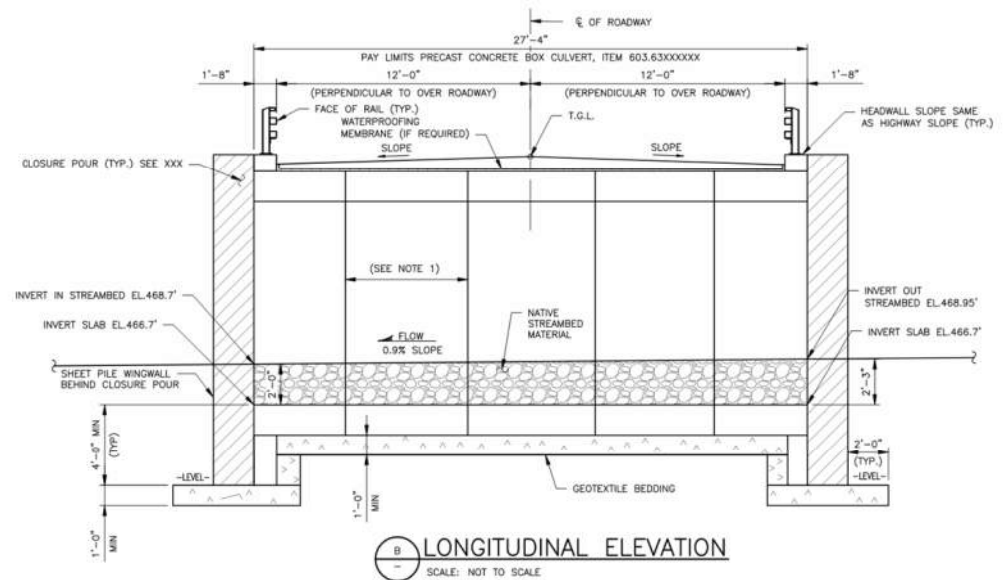
- Option 1: Box Culvert with Concrete Wingwalls
- Option 2: Box Culvert with Sheet Pile Wingwalls
- Option 3: Staged Construction
- Option 4: Superbox Culvert



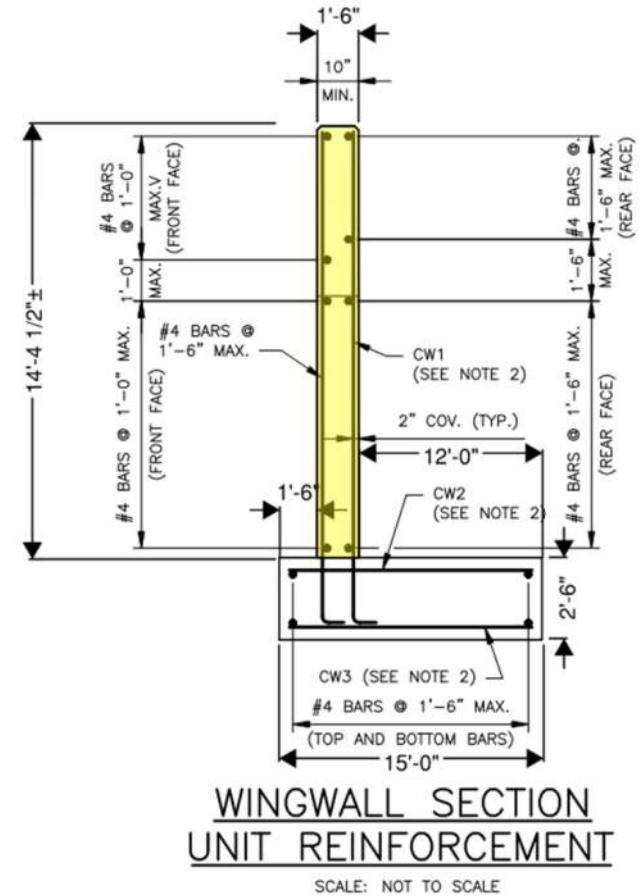
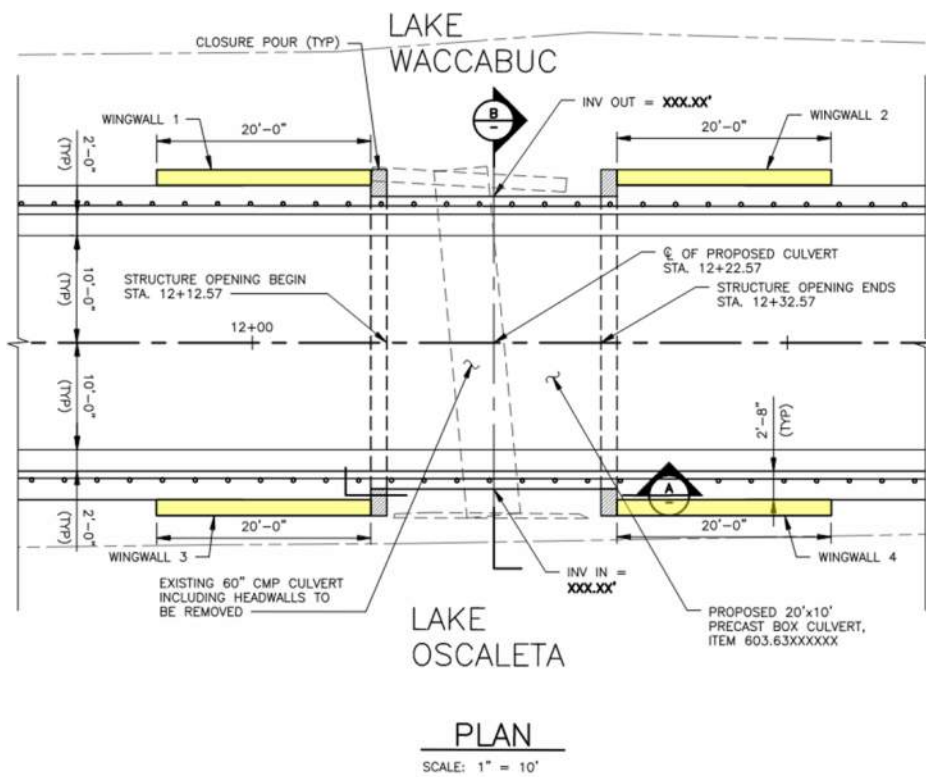
BOX CULVERT



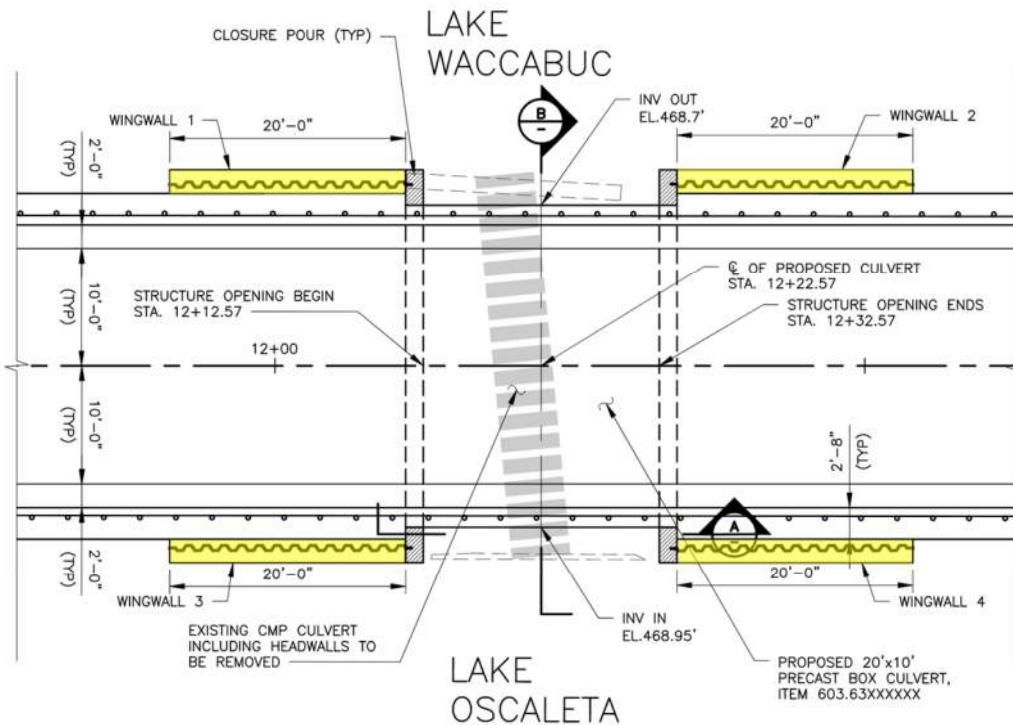
A CULVERT SECTION
SCALE: NOT TO SCALE



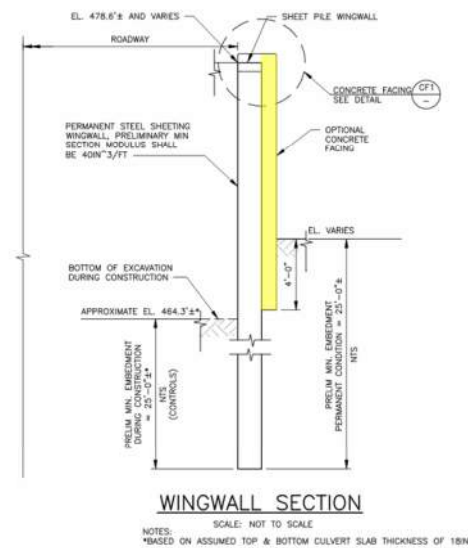
OPTION 1: CONCRETE WINGWALLS



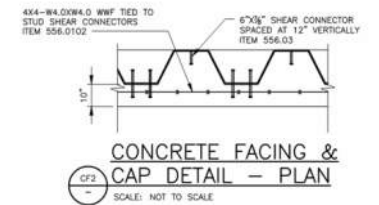
OPTION 2: SHEET PILE WINGWALLS



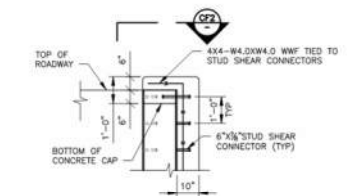
PLAN
SCALE: 1" = 10'



WINGWALL SECTION
SCALE: NOT TO SCALE



CONCRETE FACING & CAP DETAIL - PLAN
SCALE: NOT TO SCALE



CONCRETE FACING & CAP DETAIL - SECTION
SCALE: NOT TO SCALE



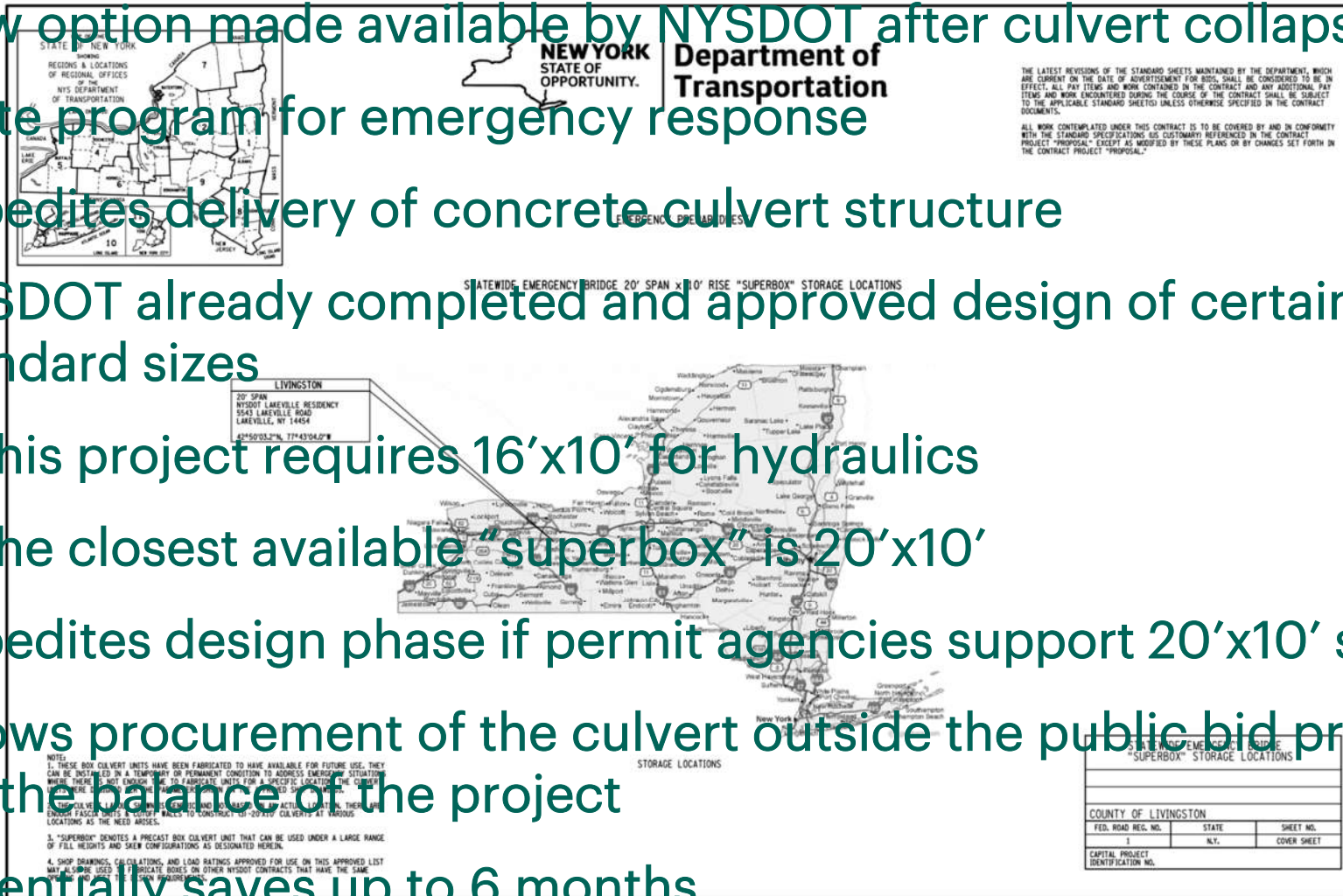
OPTION 3: STAGED CONSTRUCTION

- Longer culvert length needed
- Construction encroaches into wetlands
- Additional Temporary Support of Excavation for different phases of work
- Maintains one-way traffic during construction and avoids detour
- Placement & erection during nighttime (road closure required)
- Size of Construction equipment with limited space
- Longer duration of construction
- Increased cost of construction

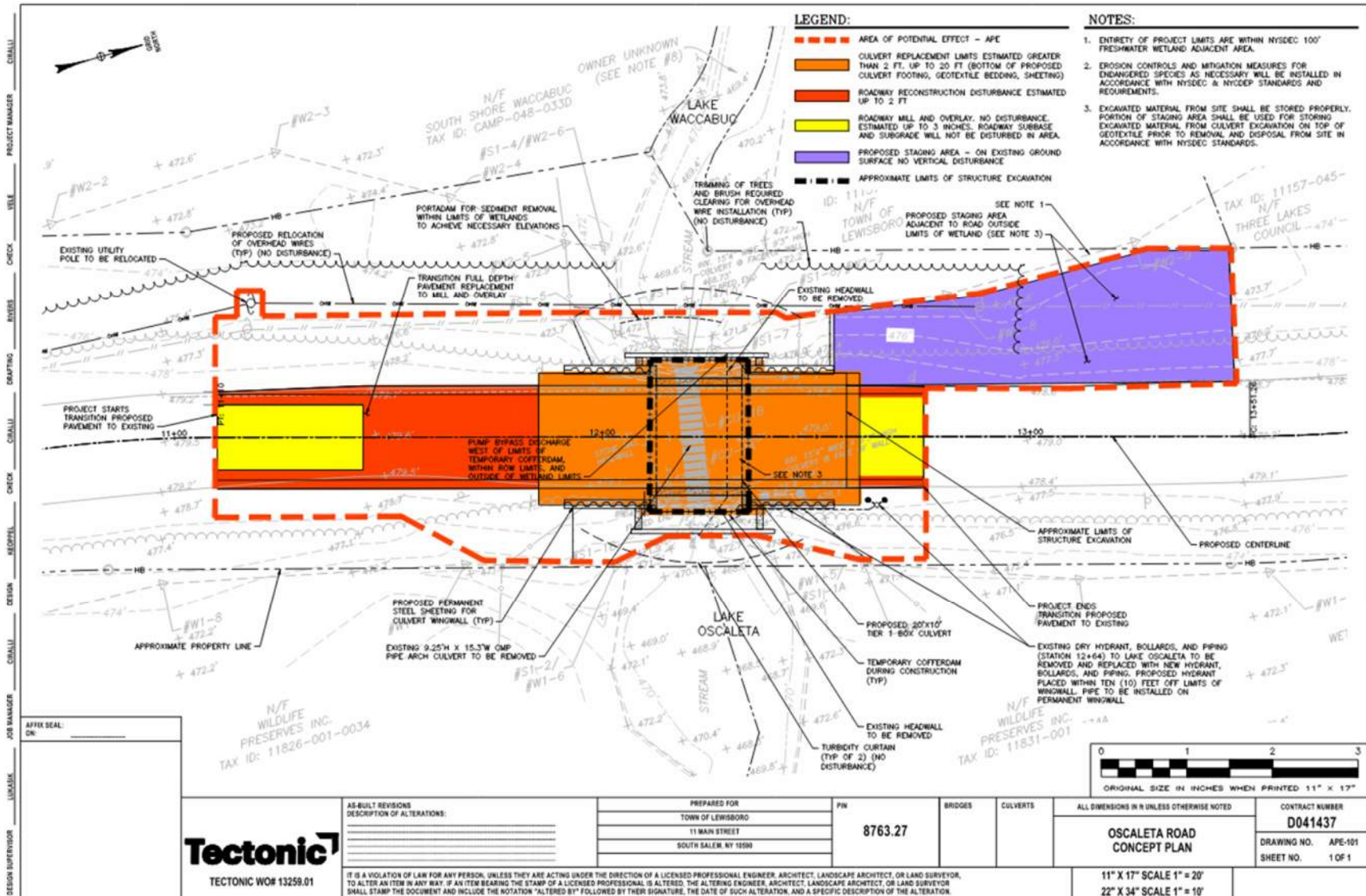


OPTION 4: "SUPERBOX" CULVERT

- New option made available by NYSDOT after culvert collapse
- State program for emergency response
- Expedites delivery of concrete culvert structure
- NYSDOT already completed and approved design of certain standard sizes
 - This project requires 16'x10' for hydraulics
 - The closest available "superbox" is 20'x10'
- Expedites design phase if permit agencies support 20'x10' size
- Allows procurement of the culvert outside the public bid process for the balance of the project
- Potentially saves up to 6 months



AREA OF POTENTIAL EFFECTS



PERMITS

- NYSDEC
 - Freshwater Wetlands Permit (Article 24)
 - Water Quality Certification
- NYCDEP: SWPPP
- USACE PERMITS: Section 404 Permit
 - NWP 3
 - NWP 14
- NYSDOT Environmental Review:
 - Threatened & Endangered Species: Consultation with NYSDEC & USFWS
 - Historic or Archeological Resources: Consultation with NYSHPO



NYSDOT FUNDING THROUGH BRIDGE-NY

- Grant for 1.4M dollars from NYSDOT
- NYSDOT Process Required:
 - Site Investigation
 - Development of Alternatives
 - Preliminary Design
 - DOT Review
 - Detailed Design
 - Permitting
 - Procurement, Bidding, Award
 - Construction



SCHEDULE

Collapse of Culvert and Support of NYSDOT can potentially expedite process:

- Preliminary Design Approval: Summer 2026
- Permits: Fall 2026 – Winter 2027
- Order Superbox Culvert: Late 2026 (for Spring-Summer 2027 delivery)
- Detailed Design To Approval: Start Spring 2026
- Contract Documents: Fall 2026 – Winter 2027
- Bid Advertisement, Opening, and Award: Spring 2027
- Construction: Summer 2027 - Fall 2027



NEXT STEPS

- Emergency Response Ongoing Coordination with Regulatory Agencies
- Implementing of Emergency Response Actions
- Incorporation of Emergency Response Action into Project Design
- Incorporation of Public Comments into Design
- Progress Preliminary Design concurrently with Detailed Design (subject to NYSDOT coordination)
- Design Approval from NYSDOT
- Opportunity to order culvert under Superbox program
- Acquire Permits



DISCUSSION

THANK YOU

